

Process for Removing Meredith software with Windows 7 – Graduating Students

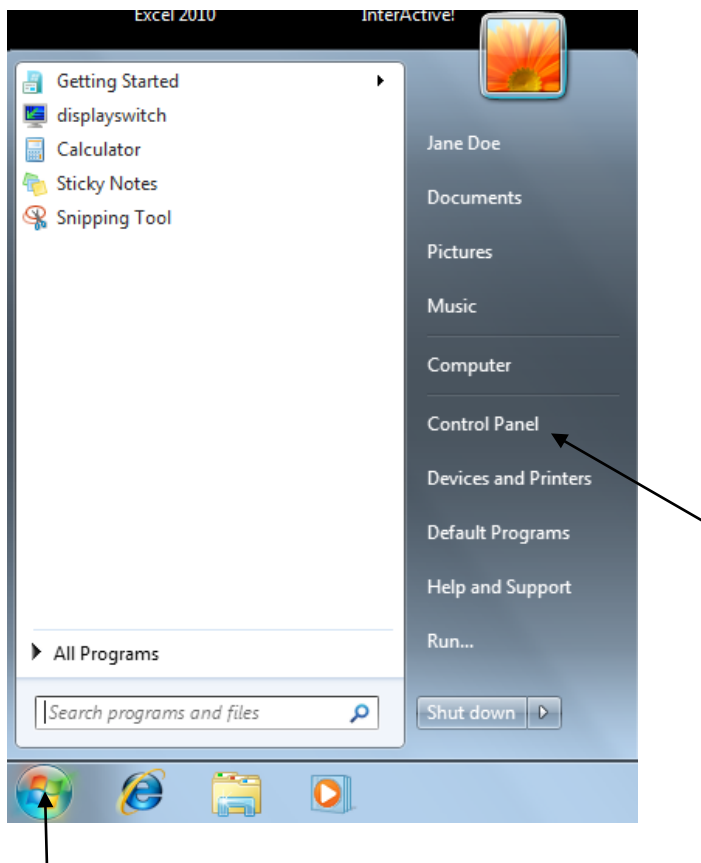
The following software must be removed from Meredith laptops before ownership is transferred to graduating students. **Some of the software listed below might not be on your system, if so skip to the next piece of software.**

- Fathom
- Freedom Import Printer
- Graphing Calculator
- IBM SPSS Statistics 19
- Logger Pro
- Maple
- MatLab
- McAfee Site Advisor
- McAfee VirusScan
- McAfee Agent
- PASW
- Pharos
- Sketchpad
- SPSS
- TI BlackLink 32
- TI Interactive!
- WYNN
- Meredith Wireless Access

Follow the steps below for removal of the software. If you have any problems with the process or are uncomfortable with these steps please bring your laptop in to Technology Services Helpdesk and we will re-image your system for you. **If you choose to have your system re-imaged, you MUST back your data up prior to these steps because we will be refreshing the software on your hard drive and it will erase your data and any extra programs you have loaded.**

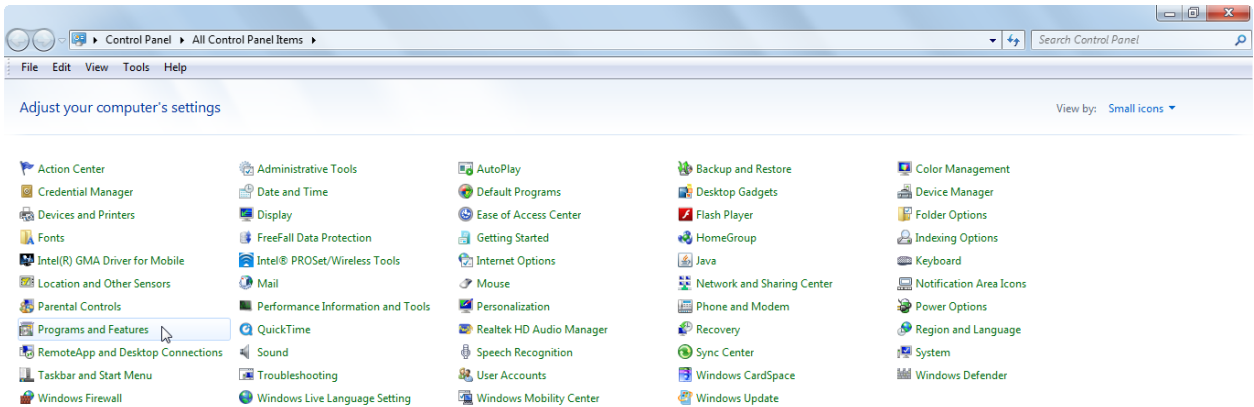
1. Go to: **Start > Control Panel**

This will open up the Control Panel Window



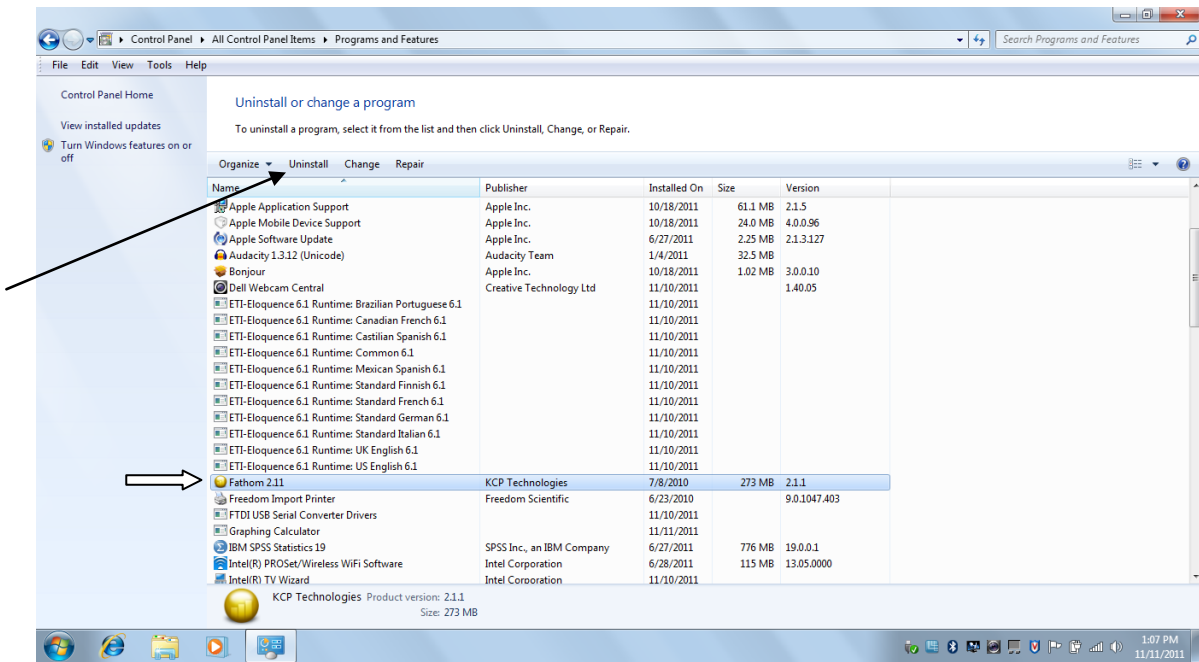
2. <Double-click> **“Programs and Features”**

This will open up the Programs and Features Window where the software you need to remove is listed.

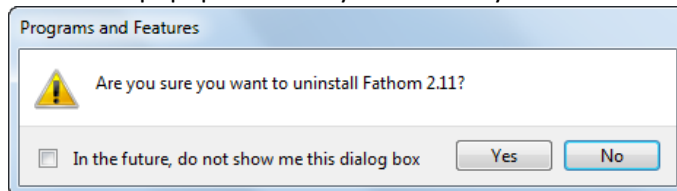


3. <Single-click> Fathom to highlight it.

a. Click “Uninstall”



b. The below popup will ask if you are sure you want to uninstall Fathom.



i. Click “Yes”

4. <Single-click> Freedom Important Printer to highlight it.
 - a. Click "Uninstall"
 - i. Click "Yes" when asked are you sure you want to uninstall this product.
 - ii. Click "No" to restart your system later.
5. <Single-click> IBM SPSS Statistics 19 to highlight it.
 - a. Click "Uninstall"
 - i. Click "Yes" when asked are you sure you want to uninstall IBM SPSS Statistics 19.
 - ii. Click "Yes" when asked do you want to allow the following program to update software in this computer.
6. <Single-click> Graphing Calculator to highlight it.
 - a. Click "Uninstall"
 - i. Click "Yes" when asked are you sure you want to completely remove the select application and all of its components.
 - ii. Click "OK" when the uninstall is successfully completed.
7. <Single-click> Logger Pro to highlight it.
 - a. Click "Uninstall"
 - i. Click "Yes" when asked are you sure you want to uninstall Logger Pro.
 - ii. Click "Yes" when asked do you want to allow following program from an unknown publisher to make changes to your computer.
8. <Single-click> Maple to highlight it.
 - a. Click "Uninstall/Change"
 - i. Click "Next"
 - ii. Select "No, I will restart my system myself "
 - iii. Click "Done"
9. <Single-click> MatLab to highlight it.
 - a. Click "Uninstall/Change"
 - i. Click "Uninstall"
 - ii. Click "Finish"
 - iii. Click "OK"
10. <Single-click> McAfee Site Advisor to highlight it.
 - a. Click "Uninstall"
 - i. Click "Yes" when asked are you sure you want to uninstall McAfee SiteAdvisor Enterprise.
 - ii. Click "Yes" when asked do you want to allow the following program to update software on this computer.
11. <Single-click> McAfee VirusScan Enterprise to highlight it.
 - a. Click "Uninstall"
 - i. Click "Yes" when asked are you sure you want to uninstall McAfee VirusScan Enterprise.
 - ii. Click "Yes" when asked do you want to allow the following program from an unknown publisher to make changed to this computer.

12. <Single-click> McAfee Agent to highlight it.
 - a. Click "Uninstall"
 - i. Click "Yes" when asked are you sure you want to uninstall McAfee Agent.
 - ii. Click "Yes" when asked do you want to allow the following program from an unknown publisher to make changed to this computer.

13. <Single-click> PASW to highlight it.
 - a. Click "Uninstall"
 - i. Click "Yes" when asked are you sure you want to uninstall IBM SPSS Statistics 19.
 - ii. Click "Yes" when asked do you want to allow the following program to update software in this computer.

14. <Single-click> Pharos to highlight it.
 - a. Click "Uninstall/Change"
 - i. Select "Run Uninstaller"
 - ii. Click "Next"
 - iii. Click "Next"
 - iv. Select "Pharos Popups"
 - v. Click "Next"
 - vi. Click "Next"
 - vii. Click "Start"
 - viii. Click "Finish"

15. <Single-click> Sketch Pad to highlight it.
 - a. Click "Uninstall/Change"
 - i. Click "Next"
 - ii. Click "Finish"

16. <Single-click> SPSS to highlight it.
 - a. Click "Uninstall"
 - i. Click "Yes" when asked are you sure you want to uninstall IBM SPSS Statistics 19.
 - ii. Click "Yes" when asked do you want to allow the following program to update software in this computer.

17. <Single-click> TI BlackLink 32 to highlight it.
 - a. Click "Uninstall/Change"
 - i. Click "Yes" when asked are you sure you want to complete remove the selected applications and all of its components.
 - ii. Click "Yes to All"
 - iii. Click "OK" when the uninstall is successfully completed.

18. <Single-click> TI Interactive! to highlight it.
 - a. Click "Uninstall"
 - i. Click "Yes" when asked are you sure you want to uninstall TI InterActive!.
 - ii. Click "Yes" when asked do you want to allow the following program from an unknown publisher to make changes to this computer?

19. <Single-click> Wynn to highlight it.
 - a. Click "Uninstall"
 - i. Click "OK" when asked do you want to completely remove the selected application and all of its components.
 - ii. Click "Finish"
20. Close the Control Panel Window
21. The last step is to remove the Meredith Wireless Access.
 - a. If you have a Dell**
 - i. Click on the Internet Access shortcut on the task bar.
 1. Select Meredith-public
 - a. Click the connect button
 - b. Select the public network
 - c. Click the close button
 - ii. Click on the Internet Access shortcut on the task bar.
 1. Select Open Network and Sharing Center
 - a. Select Manage Wireless networks from the left hand side of the window.
 - b. Select the public network
 - c. Click the close button
 2. Select the Meredith2009-10 network
 - a. Click remove
 - b. Click "yes", when asked are you sure you want to remove this network.
 - b. If you have a Lenovo**
 - i. Click on the Access Connections shortcut on the task bar.
 - ii. Click "Launch Access Connections"
 1. Click the Disconnect button
 2. Click the Location Profiles Tab
 - a. Select the Meredith2009-10 profile to highlight it.
 - b. Click Delete, and OK to delete the profile.

You have completed the uninstall process. Please bring your laptop to Technology Services, Noel Annex. We will confirm the software removal and provide you a transfer of ownership certificate as well as a Windows 7 and Office recovery CDs should a problem arise in the future.

Once you have your ownership papers the laptop is yours to do what you want to with. You will need these papers for service or if you want to sell the laptop.

In the future if you need to have it serviced, you can check the warranty here: <http://www-307.ibm.com/pc/support/site.wss/document.do?Indocid=look-warnty#sw>

To find an authorized service provider use this link: <http://bplocator.lenovo.com/>. Once you have your ownership papers you will need to go to another authorized service provider for service on your laptop. Meredith Technology Services will no longer be able to work on your laptop.