

Configuring Meredith2009-10 Profile in Access Connections

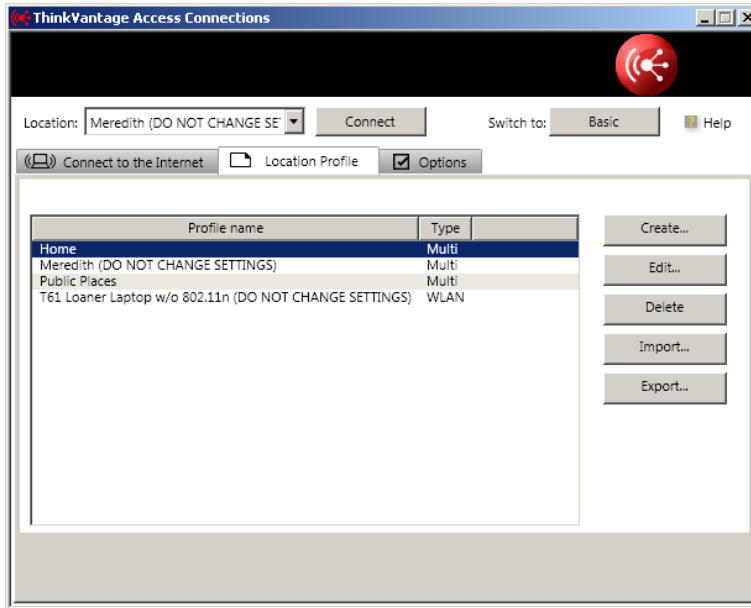
1. Go to the **Start Menu, Programs, ThinkVantage**, and select **Access Connections**. You may also find a short cut on the desk top or on the top of the Start Menu.
2. Once you have selected Access Connections the window below will appear.



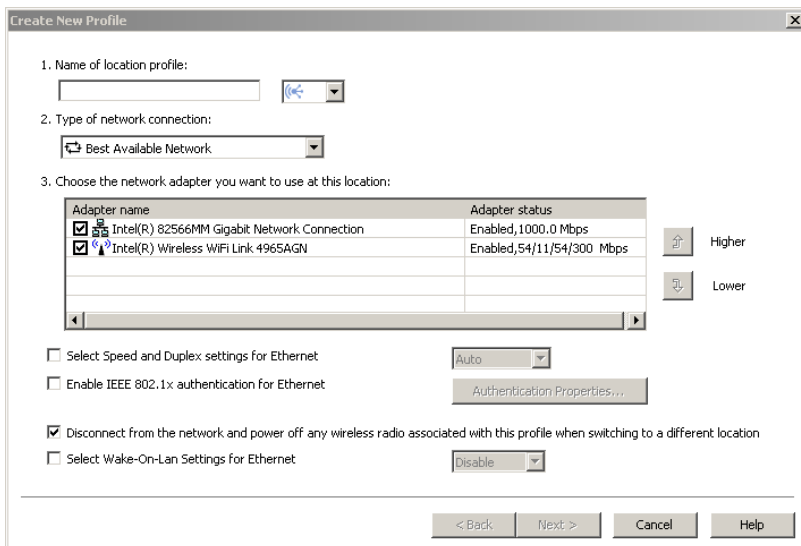
3. Click the Switch to: **Advanced** if needed, the window below will appear. The name in the **Location** drop down box will be the name of the location that you are currently connected to or the location the laptop was last connected to.



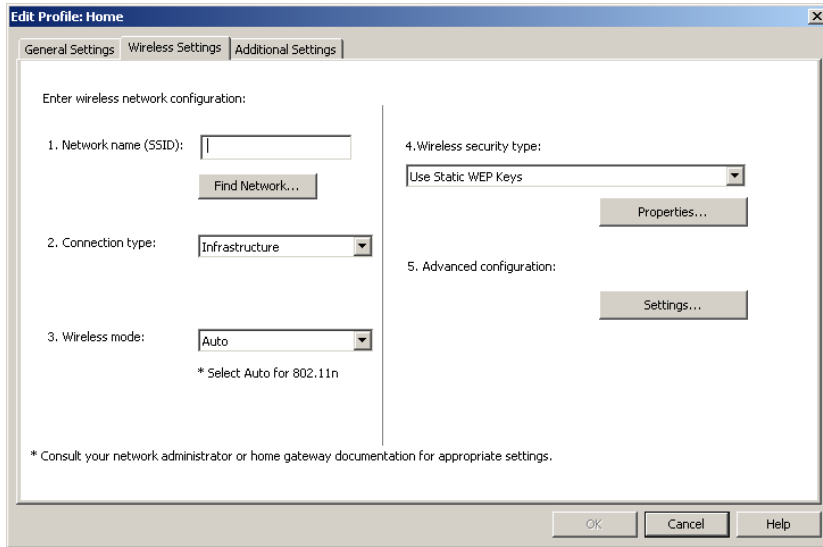
- Click on the **Location Profile** tab, and the screen below will appear.



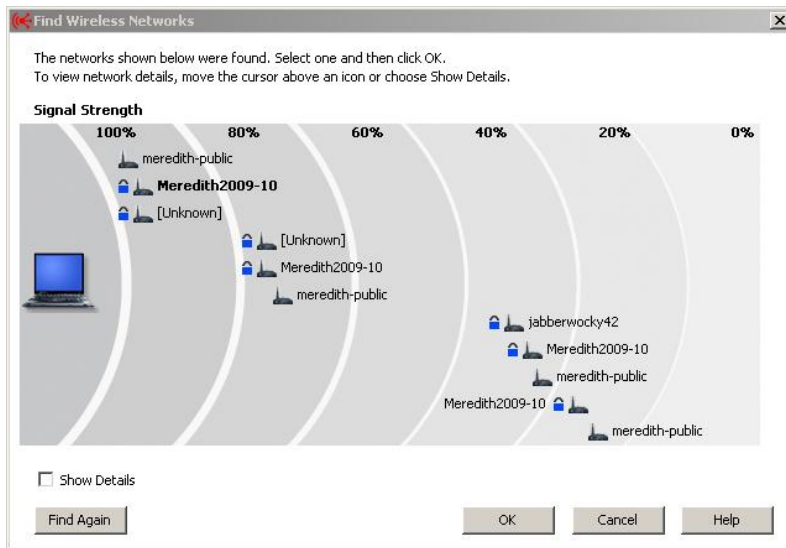
- Click on the **Create** button on the right side of the window to Create a new profile.
- The window below will appear you will need to enter the information for the new profile.
 - Name of location profile:** Meredith2009-10
 - Type of network connection:** Should stay at best available network.
 - Choose the network adapter you want to use at the location:** Should stay the same.
 - Click the **OK** button to go to the wireless settings. The **Wireless Settings** tab will appear.



7. Select the **Wireless** Tab to get to the window below. Click on the **Find Network** button.



8. The screen below will appear. Select the **Meredith2009-10** profile. Click the **OK** button.



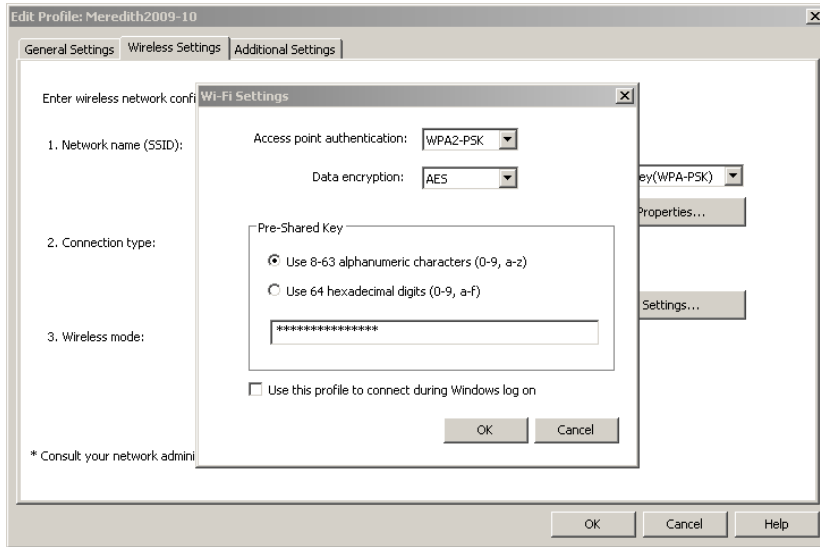
9. The **Edit Profile** screen below appears again.

10. Go to step **4 Wireless security type**, and select **User Wi-Fi Protected Access – Pre Shared Key(WPA-PSK)**.

11. Click the **properties** button to get to the Wi-Fi settings window, the screen below will appear.

- a. **Access point authentication:** WPA2-PSK (select option)
- b. **Date Encryption:** AES
- c. **Pre-Shared Key:** Meredith2009-10

12. The screen should appear as seen below.



13. Click the **OK** button to exit out of the screen.

14. Click the **Finish** button. Select **Yes** to apply this profile now.

15. The window below will appear as Access Connections attempts to connect to the network. Once it is done the same window will tell you if the connection attempt was successful or not.

