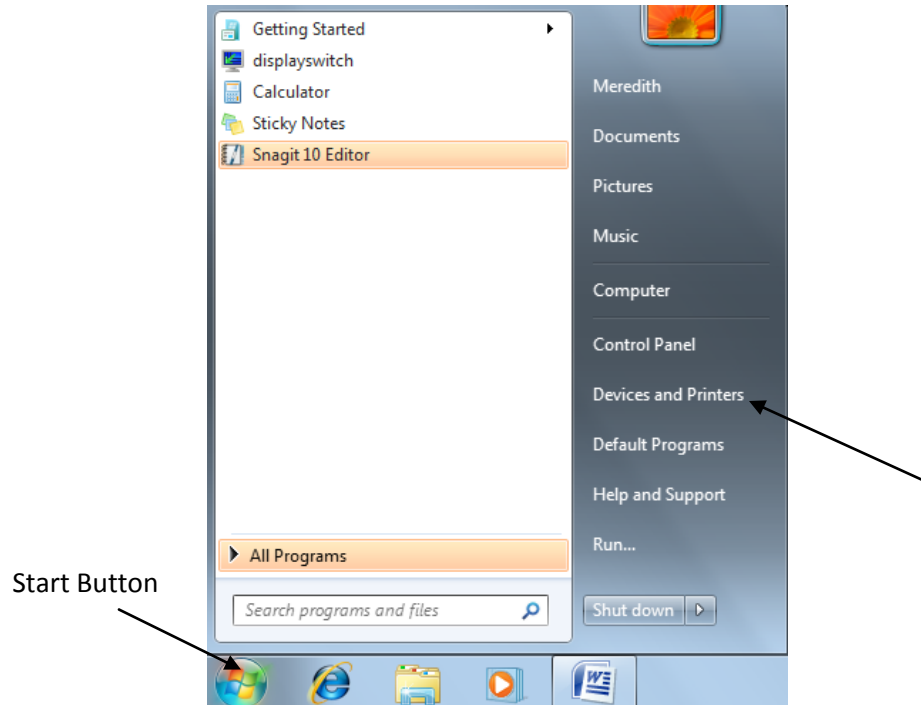


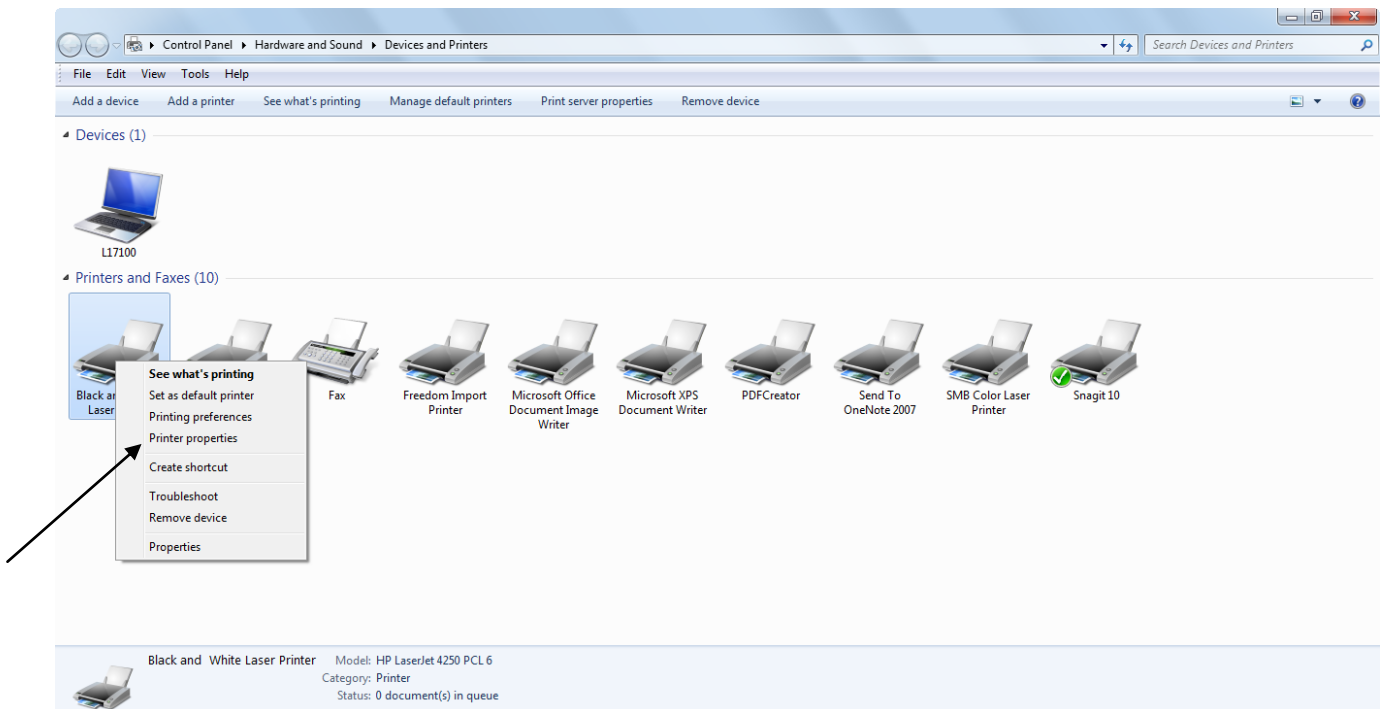
Windows 7 – Instruction to set printers for Duplex printing

Black and White Laser Printer

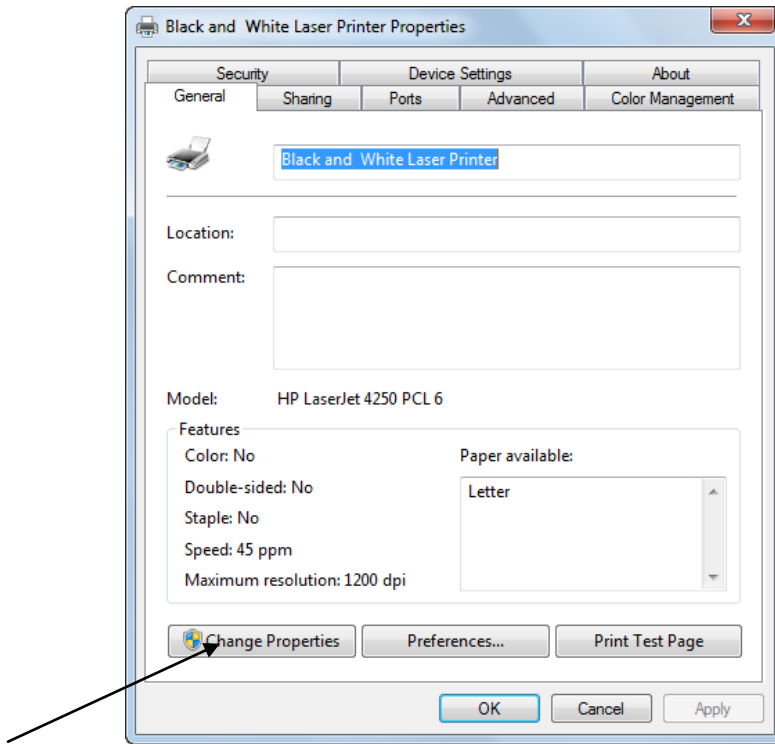
1. Click the **Start** button then select **Devices and Printers**



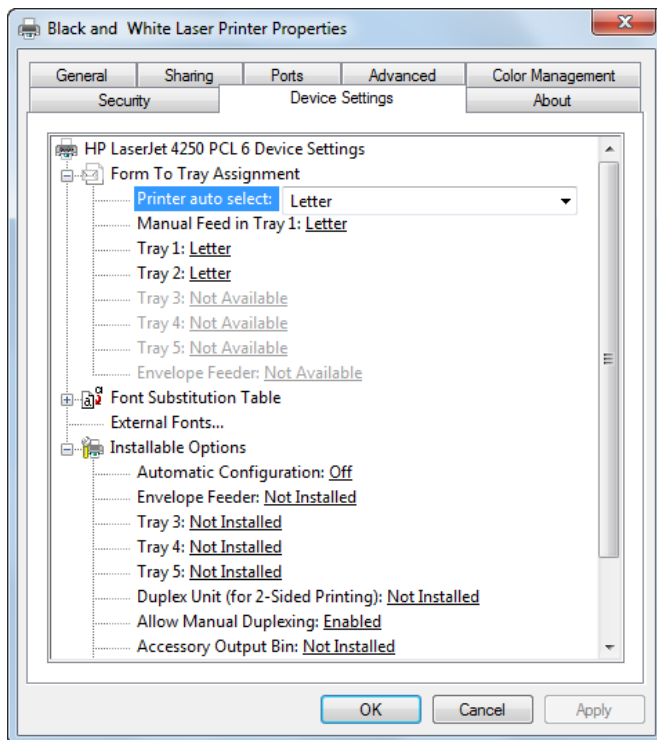
2. Right click the **Black and White Laser Printer** and select **Printer Properties** (not properties)



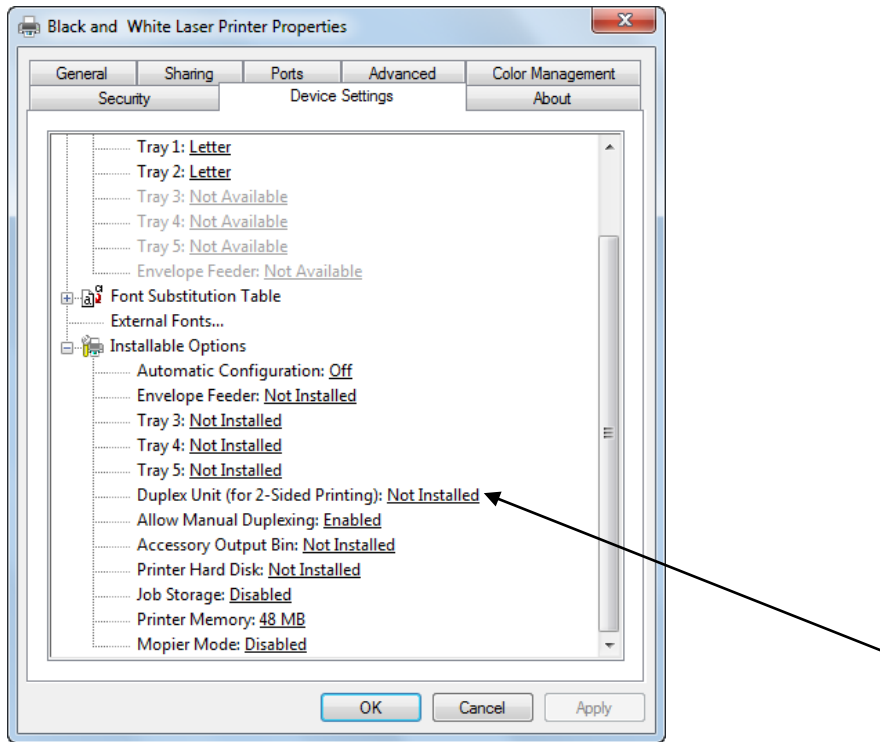
3. Click the **Change Properties** button



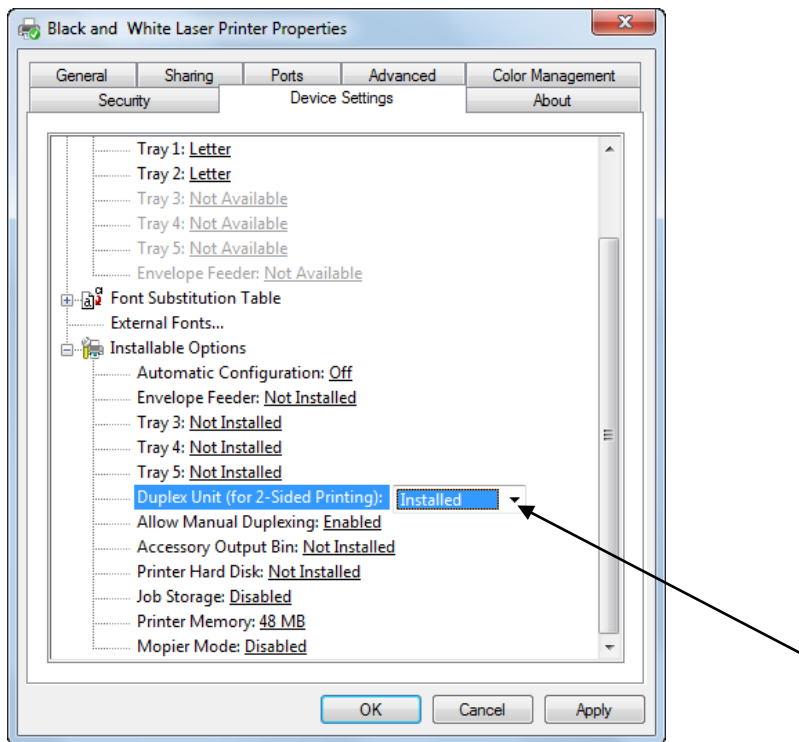
4. Select the **Device Settings** tab



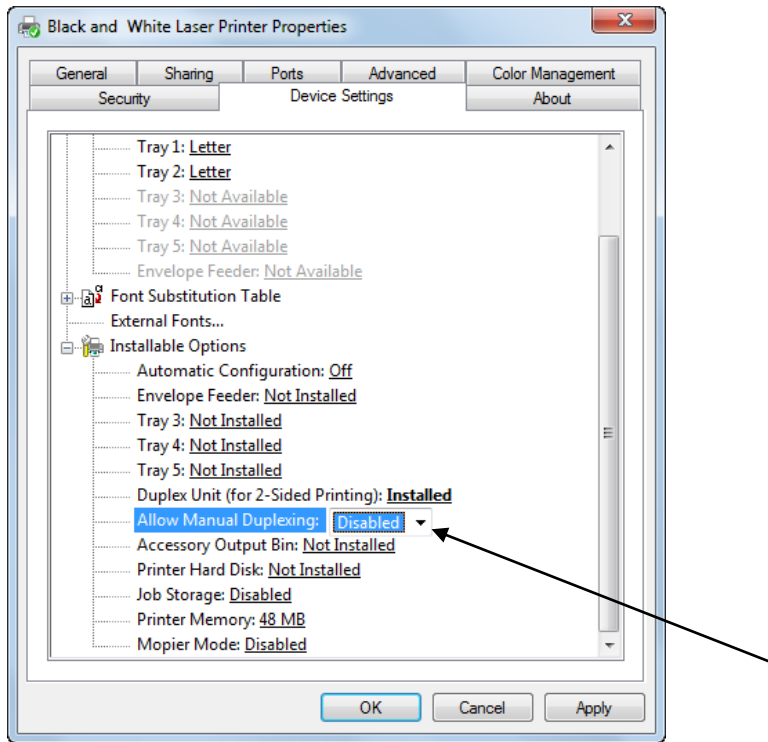
5. Scroll down to Duplex Unit (for 2 sided Printing)



6. Change **Not installed** to **Installed** by click the down arrow of the drop down box



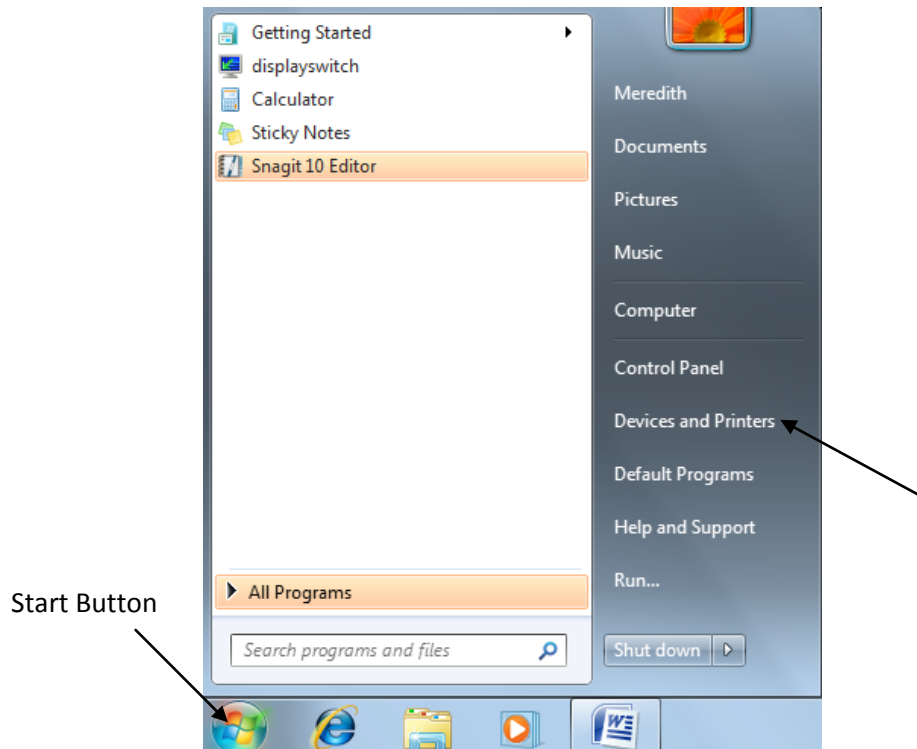
7. On the next line **Allow Manual Duplexing**, change **Enabled** to **Disabled**



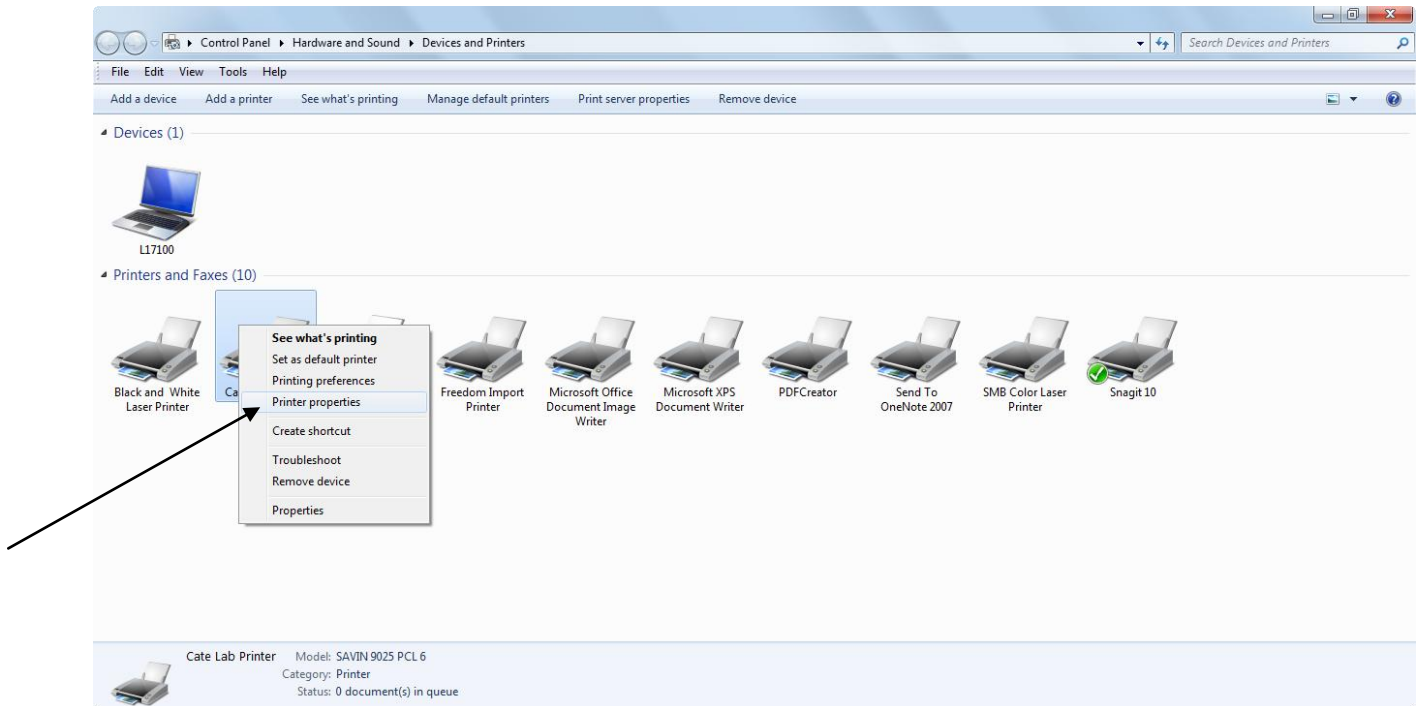
8. Click the **Apply** button then Click the **OK** to finish

Cate Lab Printer

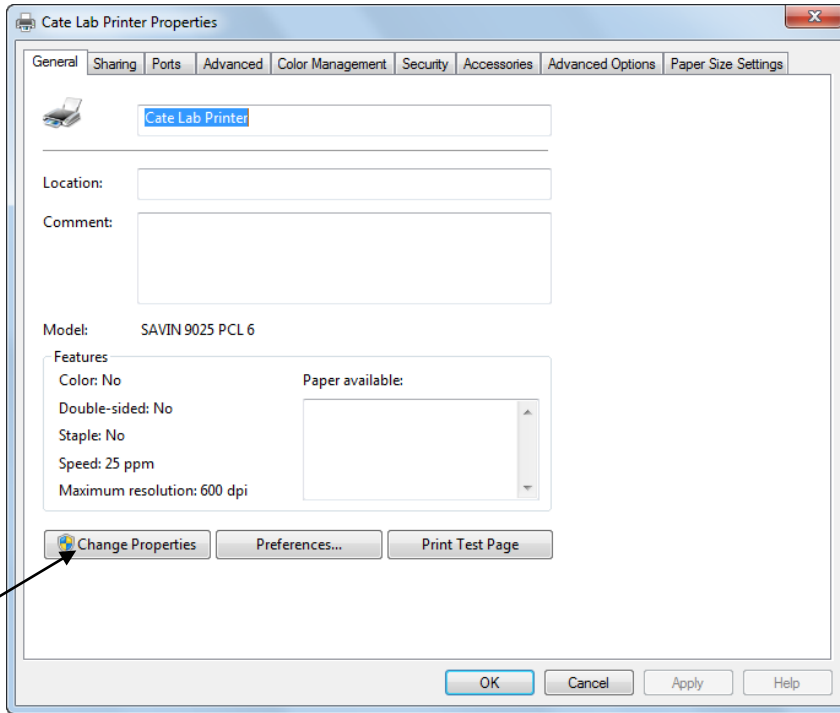
1. Click the **Start** button then select **Devices and Printers**



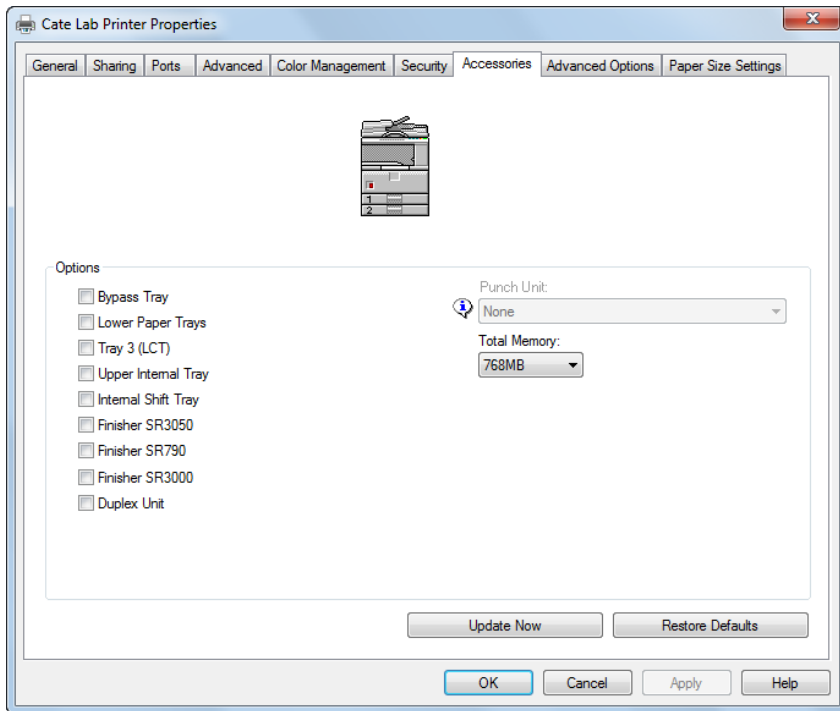
2. **Right** click on the **Cate Lab Printer** and select **Printer Properties** (not properties)



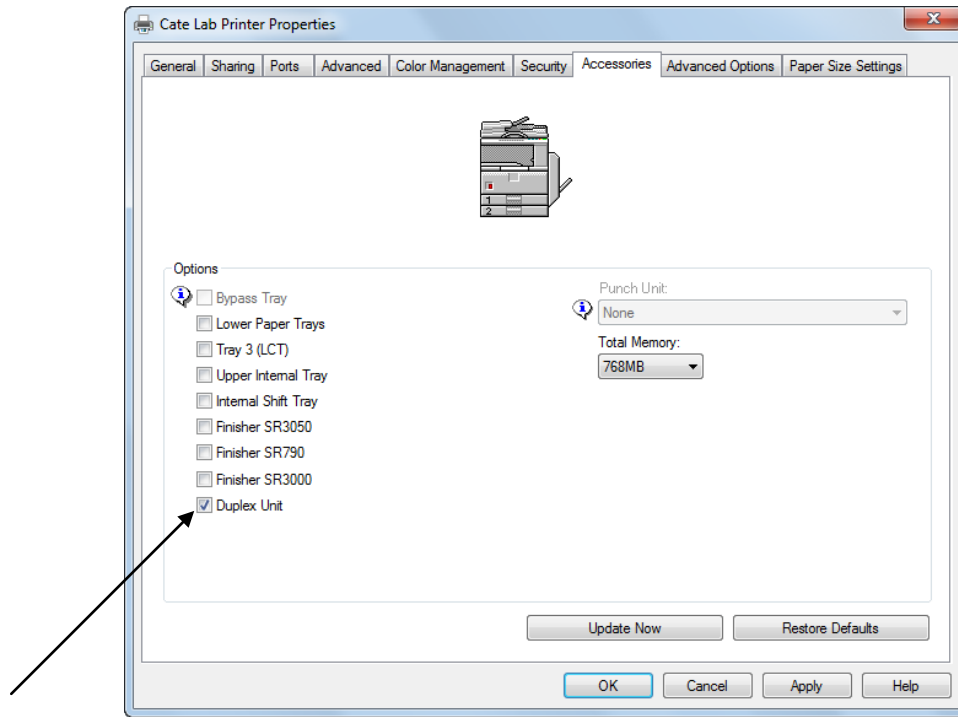
3. Click the **Change Properties** button



4. Select **Accessories**



5. Check **Duplex Unit**



6. Press the **Update Now** button, then the **Apply** button, and then the **OK** button